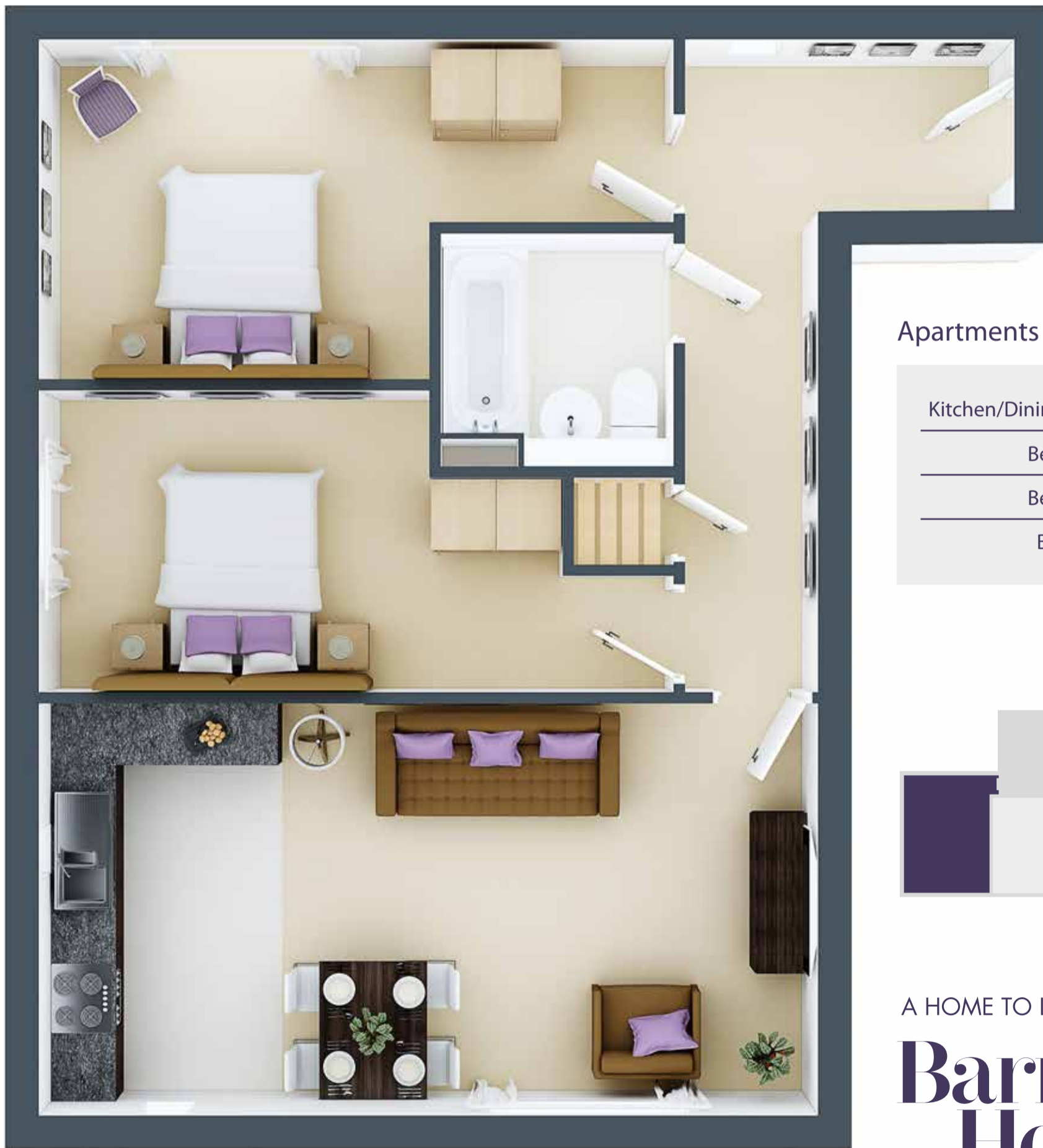


Bridgewalk

APARTMENTS ON THE BANKS

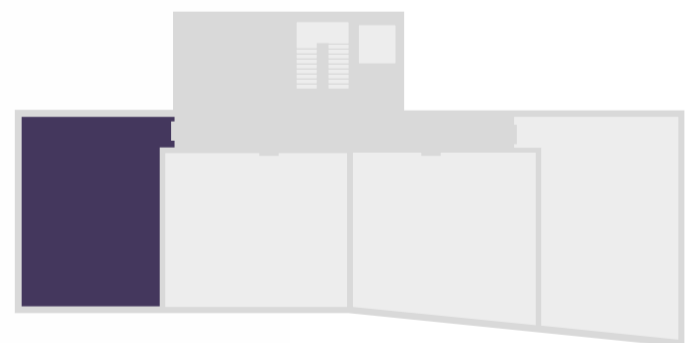
Thompson



Apartments

1 5 9 13

Kitchen/Dining/Living	7.02 x 3.72m
Bedroom 1	5.85 x 3.07m
Bedroom 2	2.72 x 4.72m
Bathroom	2.10 x 2.10m



A HOME TO LOVE

Barnfield Homes

WWW.BARNFIELD-HOMES.CO.UK

All plans are not drawn to scale and are for illustrative purposes only. Consequently, they do not form part of any contract. Room layouts are provisional and although unlikely, may be subject to alteration. CGI's represent typical interiors of the homes at Bridgewalk Apartments.

Bridgewalk

APARTMENTS ON THE BANKS

Queens



A HOME TO LOVE

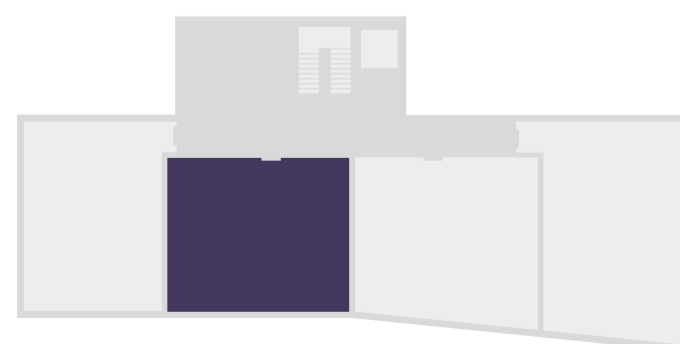
Barnfield Homes

WWW.BARNFIELD-HOMES.CO.UK

Apartments

2 **6** **10** **14**

Kitchen/Dining/Living	7.85 x 3.46m
Bedroom 1	5.65 x 3.46m
Bedroom 2	5.65 x 2.90m
Bathroom	2.10 x 2.10m



All plans are not drawn to scale and are for illustrative purposes only. Consequently, they do not form part of any contract. Room layouts are provisional and although unlikely, may be subject to alteration. CGI's represent typical interiors of the homes at Bridgewalk Apartments.

Bridgewalk

APARTMENTS ON THE BANKS

Victoria



Apartments **3 7 11 15**

Kitchen/Dining/ Living	8.79 x 3.51m
Bedroom 1	5.82 x 2.90m
Bedroom 2	6.23 x 2.73m
Bathroom	2.10 x 2.10m



A HOME TO LOVE

Barnfield Homes

WWW.BARNFIELD-HOMES.CO.UK

All plans are not drawn to scale and are for illustrative purposes only. Consequently, they do not form part of any contract. Room layouts are provisional and although unlikely, may be subject to alteration. CGI's represent typical interiors of the homes at Bridgewalk Apartments.

Bridgewalk

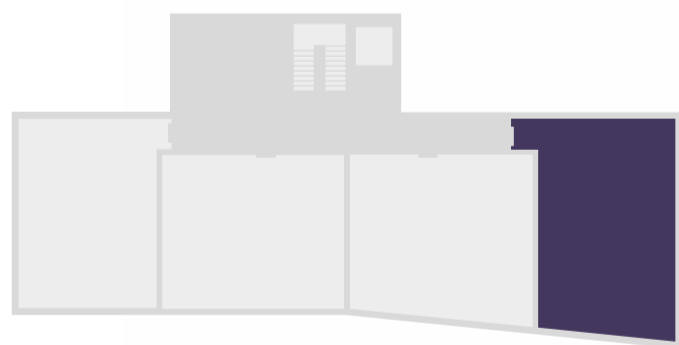
APARTMENTS ON THE BANKS

Towneley

Apartments

4 8 12 16

Kitchen/Dining/Living	6.97 x 5.35m
Bedroom 1	4.67 x 2.74m
Bedroom 2	5.67 x 3.06m
Bathroom	2.10 x 2.10m



A HOME TO LOVE

Barnfield Homes

WWW.BARNFIELD-HOMES.CO.UK

All plans are not drawn to scale and are for illustrative purposes only. Consequently, they do not form part of any contract. Room layouts are provisional and although unlikely, may be subject to alteration. CGI's represent typical interiors of the homes at Bridgewalk Apartments.

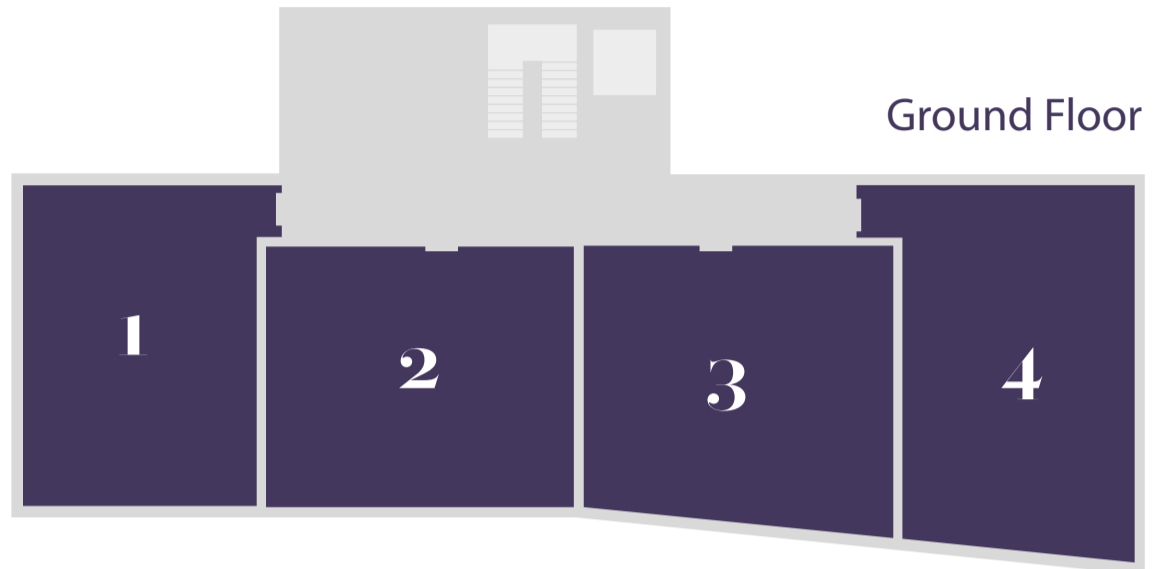


Bridgewalk

APARTMENTS ON THE BANKS

Shompson

1 5 9 13



Ground Floor

Queens

2 6 10 14



First Floor

Victoria

3 7 11 15



Second Floor

Towneley

4 8 12 16



Third Floor